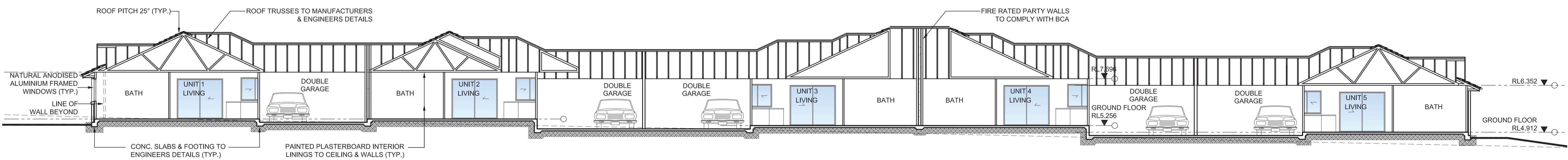
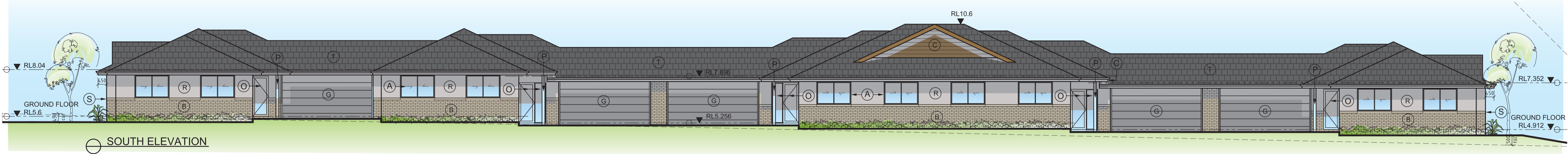
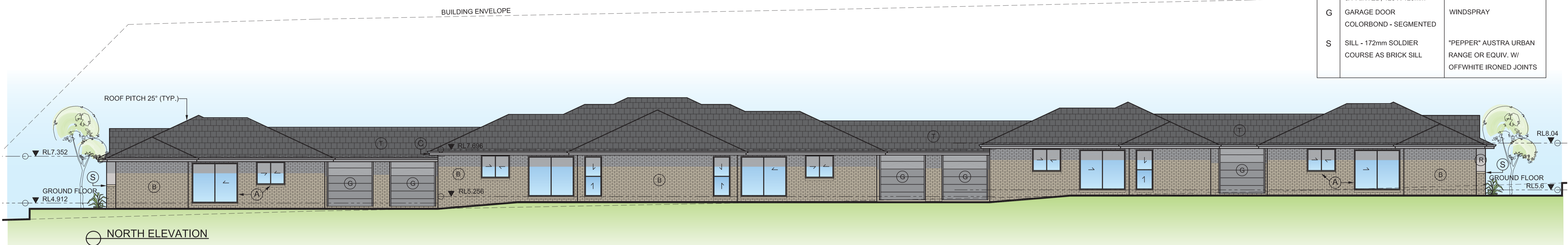


EXTERNAL FINISHES SCHEDULE		
REF	TYPE	FINISH / COLOUR
T	FLAT PROFILE CONC. TILE	'STORM GREY' STRIATA FROM BORAL
R	ROCKCOTE	PAINT- WINDSPRAY
B	FACE BRICK	'PEPPER' AUSTRALIAN RANGE OR EQUIV. W/ OFFWHITE IRONED JOINTS
C	CEDAR TIMBER BARGE / INFILL	CLEAR SEALANT
A	WINDOW / DOOR FRAME SLIDING OR DOUBLE HUNG	ANODISED ALUMINIUM
O	OPAQUE GLASS, ALUMINIUM FRAMED WINDOW AND DOOR	ANODISED ALUMINIUM W/ OPAQUE GLASS
C	COLORBOND GUTTER FASCIA AND DOWNPIPES	WINDSPRAY
P	TIMBER POST - DRESSED & PAINTED, 125 X 125mm	PAINT- WINDSPRAY
G	GARAGE DOOR COLORBOND - SEGMENTED	WINDSPRAY
S	SILL - 172mm SOLDIER COURSE AS BRICK SILL	'PEPPER' AUSTRALIAN RANGE OR EQUIV. W/ OFFWHITE IRONED JOINTS



No	Date	Revision
01	07.07.08	ISSUED FOR REVIEW

Job no.	13723	01 A03
Revision no.		
Scale		

P.O. Box 552, Terrigal, N.S.W. 2260
 Suite 5/203 The Entrance Road, Erina, 2250
 ph 02 43654458 fax 02 43652856
 email: info@slaterarchitects.com.au
 Catherine Slater - Registered Architect No.7153

Plan2000 Pty.Ltd. Trading as Slater Architects ABN24001 954 392

Project
PROPOSED FIVE (5) VILLA DEVELOPMENT

Location
 LOT 17 & 21 in DP24491
 No. 26 HENRY KENDALL ST &
 263 BRISBANE WATER DR
 WEST GOSFORD NSW

Client
ROLFE CONSTRUCTIONS PTY LTD.

These drawings & designs are the property of Slater Architects & shall not be reproduced in whole or part without the written consent of Slater Architects

Designed by
C.SLATER

Drawn by
DBC

Checked

Date
JUNE 2008

Drawing
ELEVATIONS AND SECTION